



01642 056268 • info@vixen.co.uk

Vixen 1-4

Four Cartridge, Reverse Pulse Jet Dust Extraction System

Specification

Filter unit main body and legs made from welded and fabricated 4mm steel with relevant cross bracing support.

External surfaces - painted in epoxy powder coated paint RAL 7035 and RAL 7016

Standard Cartridge filter type - 80/20 cellulose polyester media

Supplied with inlet duct

Cartridge Number 4PCS

Starter Panel Included

Total Filter media surface area is 92m²

Application Dust collect (normal temperature)

Dust particle collection - metal dust collection bin underneath main hopper

ATEX rated explosion relief panel - optional

Polyester - Anti-static - Nanoweb Fr - full PTFE cartridges - available as a cost option

Automatic Cartridge cleaning - downdraft, reverse pulse air jet bank (frequency adjustable) - digital version optional

Technical Characteristics

- Dust out used automatically pulse & recoil equipment
- Fan air flow 3000m³/ hr / 1766cfm at 2,400Pa
- Fan motor size 3Kw (roof mounted)
- Resistance Initial filtering resistance—125-250Pa
- Normal filtering resistance—500-750Pa
- Final filtering resistance—1000-1250Pa
- Pressure-resistant -5000Pa
- Applicable temperature ≤ 135°C
- Efficiency 99.99%@ 2μ



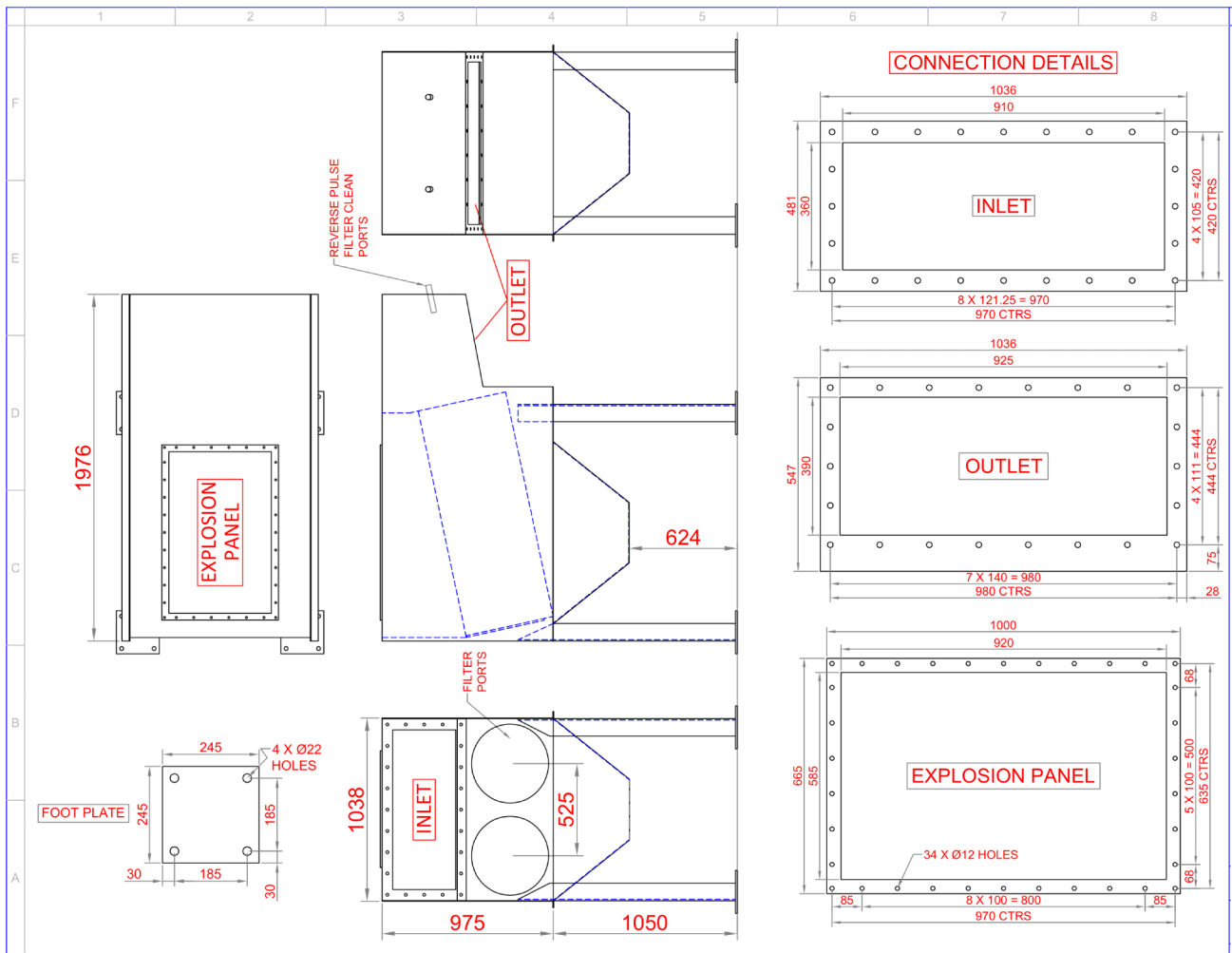


01642 056268 • info@vixen.co.uk

Vixen 1-4

Four Cartridge, Reverse Pulse Jet Dust Extraction System

See 2D Dimensions Below



Dust Extraction Supplier in Thornaby, England
 73 Jay Ave. - Thornaby - Stockton-on-Tees - TS17 9LZ
 01642 056268 • info@vixen.co.uk • www.vixen.co.uk



01642 056268 • info@vixen.co.uk

Vixen 2-8

Eight Cartridge, Reverse Pulse Jet Dust Extraction System

Specification

Filter unit main body and legs made from welded and fabricated 4mm steel with relevant cross bracing support.

External surfaces - painted in epoxy powder coated paint RAL 7035 and RAL 7016

Standard Cartridge filter type - 80/20 cellulose polyester media

Supplied with inlet duct

Cartridge Number 8PCS

Starter Panel Included

Total Filter media surface area is 182m²

Application Dust collect (normal temperature)

Dust particle collection - metal dust collection bin underneath main hopper.

ATEX rated explosion relief panel - optional

Polyester - Anti-static - Nanoweb Fr - full PTFE cartridges - available as a cost option

Automatic Cartridge cleaning - downdraft, reverse pulse air jet bank (frequency adjustable) - digital version optional

Technical Characteristics

- Dust out Used automatically pulse & recoil equipment
- Fan air flow 5400m³/ hr / 3178cfm at 2,400Pa
- Fan motor size 5.5Kw (roof mounted)
- Resistance Initial filtering resistance—125-250Pa
- Normal filtering resistance—500-750Pa
- Final filtering resistance—1000-1250Pa,0
- Pressure-resistant -5000Pa
- Applicable temperature ≤ 135°C
- Efficiency 99.99%@ 2μ





01642 056268 • info@vixen.co.uk

Vixen 3-12

Twelve Cartridge, Reverse Pulse Jet Dust Extraction System

Specification

Filter unit main body and legs made from welded and fabricated 4mm steel with relevant cross bracing support.

External surfaces - painted in epoxy powder coated paint RAL 7035 and RAL 7016

Standard Cartridge filter type - 80/20 cellulose polyester media

Supplied with inlet duct

Cartridge Number 12PCS

Starter Panel Included

Extended legs for use with 1 tonne dust bag and automatic rotary discharge valve optional

Total Filter media surface area is 276m²

Application Dust collect (normal temperature)

Dust particle collection - metal dust collection bin underneath main hopper

ATEX rated explosion relief panel - optional

Polyester - Anti-static - Nanoweb Fr - full PTFE cartridges - available as a cost option

Automatic Cartridge cleaning - downdraft, reverse pulse air jet bank (frequency adjustable) - digital version optional

Supplied with auxiliary ductwork package including inlet, outlet and fan silencer.

Technical Characteristics

- Dust out used automatically pulse & recoil equipment
- Fan air flow 8400m³ / h / 4944cfm at 2,400Pa
- Fan motor size 7.5Kw (roof mounted)
- Resistance Initial filtering resistance—125-250Pa
- Normal filtering resistance—500-750Pa
- Final filtering resistance—1000-1250Pa
- Pressure-resistant -5000Pa
- Applicable temperature ≤ 135°C
- Efficiency 99.99%@ 2μ



Dust Extraction Supplier in Thornaby, England
73 Jay Ave. - Thornaby - Stockton-on-Tees - TS17 9LZ
01642 056268 • info@vixen.co.uk • www.vixen.co.uk

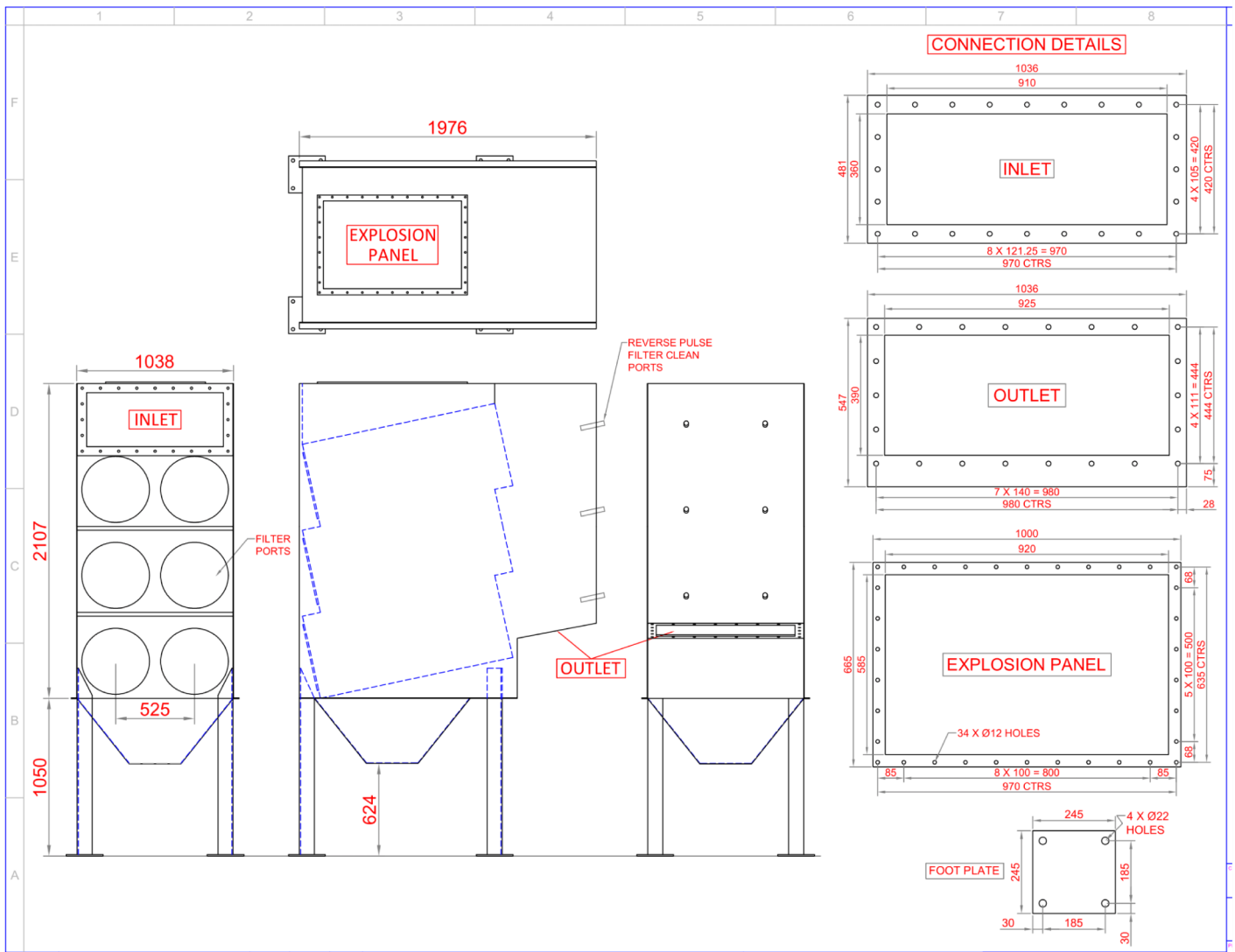


01642 056268 • info@vixen.co.uk

Vixen 3-12

Twelve Cartridge, Reverse Pulse Jet Dust Extraction System

See 2D Dimensions Below



Dust Extraction Supplier in Thornaby, England
 73 Jay Ave. - Thornaby - Stockton-on-Tees - TS17 9LZ
 01642 056268 • info@vixen.co.uk • www.vixen.co.uk



01642 056268 • info@vixen.co.uk

Vixen 4-16

Sixteen Cartridge, Reverse Pulse Jet Dust Extraction System

Specification

Filter unit main body and legs made from welded and fabricated 4mm steel with relevant cross bracing support.

External surfaces - painted in epoxy powder coated paint RAL 7035 and RAL 7016

Standard Cartridge filter type - 80/20 cellulose polyester media

Supplied with inlet duct

Cartridge Number 16PCS

Starter Panel Included

Extended legs for use with 1 tonne dust bag and automatic rotary discharge valve optional

Total Filter media surface area is 368m²

Application Dust collect (normal temperature)

Dust particle collection - metal dust collection bin underneath main hopper

ATEX rated explosion relief panel - optional

Polyester - Anti-static - Nanoweb Fr - full PTFE cartridges - available as a cost option

Automatic Cartridge cleaning - downdraft, reverse pulse air jet bank (frequency adjustable) - digital version optional

Supplied with auxiliary ductwork package including inlet, outlet and fan silencer.

Technical Characteristics

- Dust out used automatically pulse & recoil equipment
- Fan air flow 11,200m³/h / 6592cfm at 2,400Pa
- Fan motor size 11Kw (roof mounted)
- Resistance Initial filtering resistance—125-250Pa
- Normal filtering resistance—500-750Pa
- Final filtering resistance—1000-1250Pa
- Pressure-resistant -5000Pa
- Applicable temperature ≤ 135°C
- Efficiency 99.99%@ 2μ



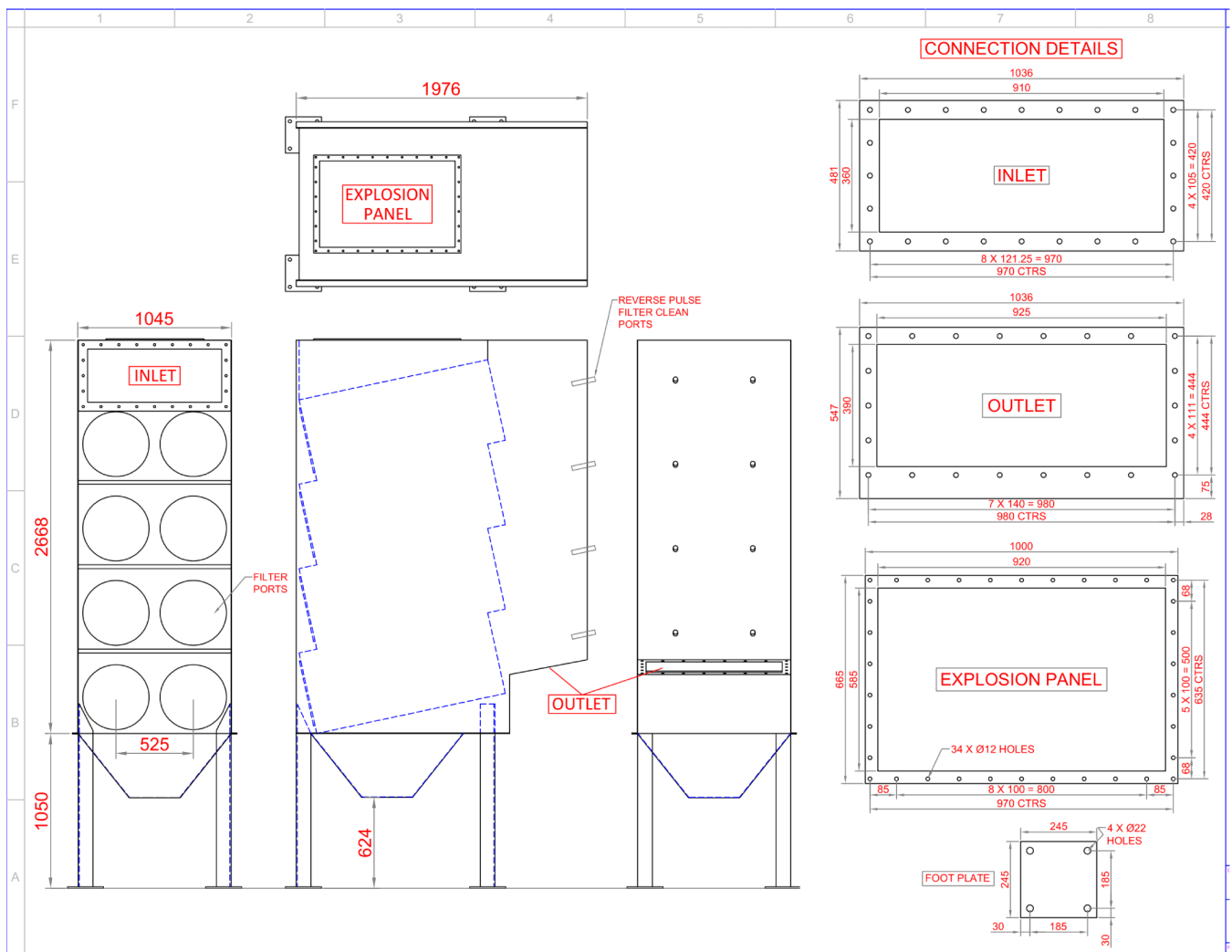


01642 056268 • info@vixen.co.uk

Vixen 4-16

Sixteen Cartridge, Reverse Pulse Jet Dust Extraction System

See 2D Dimensions Below



Dust Extraction Supplier in Thornaby, England
 73 Jay Ave. - Thornaby - Stockton-on-Tees - TS17 9LZ
 01642 056268 • info@vixen.co.uk • www.vixen.co.uk



01642 056268 • info@vixen.co.uk

Vixen 3-24

Twenty Four Cartridge, Reverse Pulse Jet Dust Extraction System

Specification

Filter unit main body and legs made from welded and fabricated 4mm steel with relevant cross bracing support.

External surfaces - painted in epoxy powder coated paint RAL 7035 and RAL 7016

Standard Cartridge filter type - 80/20 cellulose polyester media

Supplied with inlet duct

Cartridge Number 24PCS

Starter Panel Included

Extended legs for use with 1 tonne dust bag and automatic rotary discharge valve optional

Total Filter media surface area is 552m²

Application Dust collect (normal temperature)

Dust particle collection - metal dust collection bin underneath main hopper

ATEX rated explosion relief panel - optional

Polyester - Anti-static - Nanoweb Fr - full PTFE cartridges - available as a cost option

Automatic Cartridge cleaning - downdraft, reverse pulse air jet bank (frequency adjustable) - digital version optional

Supplied with auxiliary ductwork package including inlet, outlet and fan silencer.

Technical Characteristics

- Dust out used automatically pulse & recoil equipment
- Fan air flow 17,000m³/ h / 10,000cfm at 2,400Pa
- Fan motor size 18Kw (roof mounted)
- Resistance Initial filtering resistance—125-250Pa
- Normal filtering resistance—500-750Pa
- Final filtering resistance—1000-1250Pa
- Pressure-resistant -5000Pa
- Applicable temperature ≤ 135°C
- Efficiency 99.99%@ 2μ



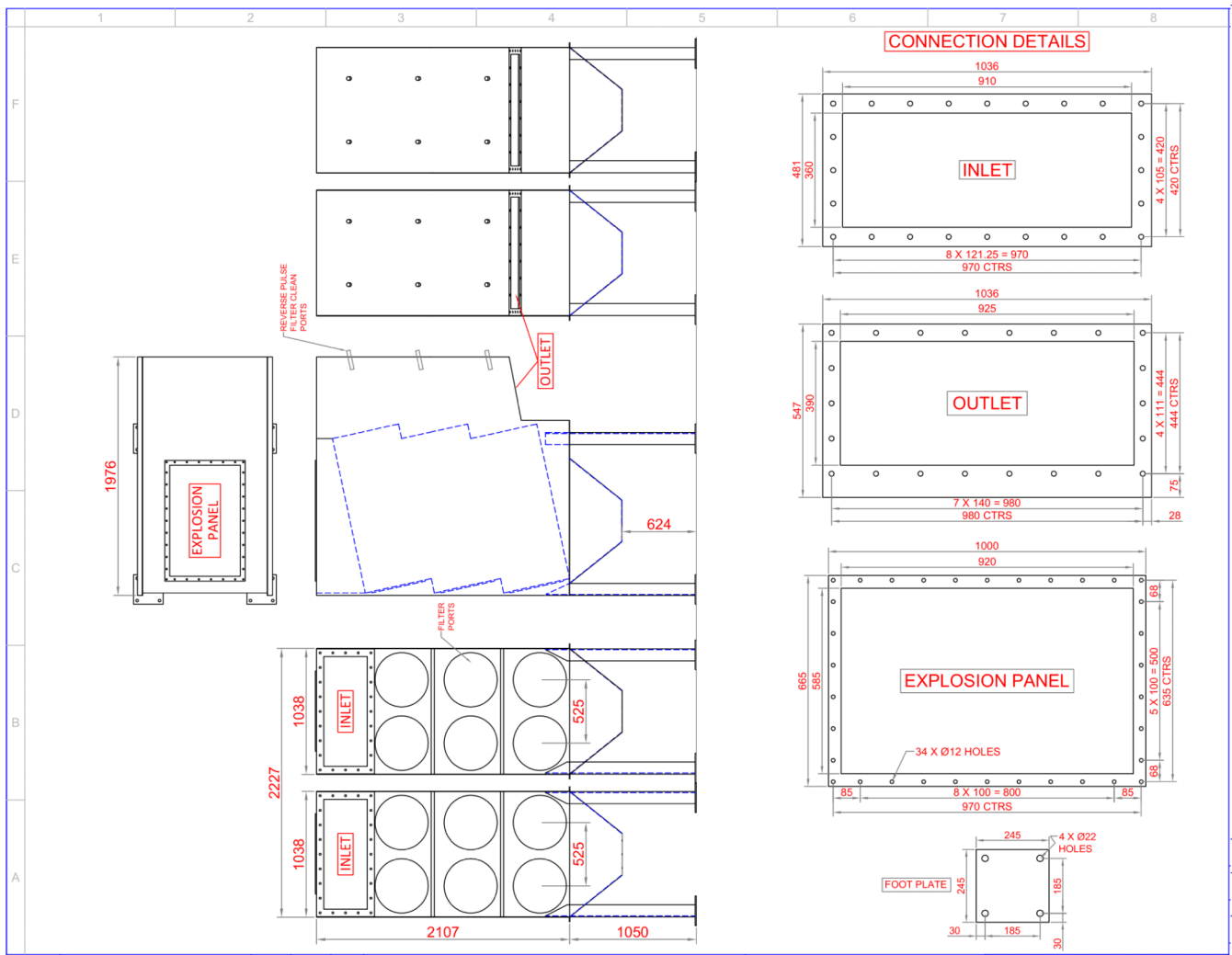


01642 056268 • info@vixen.co.uk

Vixen 3-24

Twenty-Four Cartridge, Reverse Pulse Jet Dust Extraction System

See 2D Dimensions Below



Dust Extraction Supplier in Thornaby, England
 73 Jay Ave. - Thornaby - Stockton-on-Tees - TS17 9LZ
 01642 056268 • info@vixen.co.uk • www.vixen.co.uk



01642 056268 • info@vixen.co.uk

Vixen 4-32

Thirty Two Cartridge, Reverse Pulse Jet Dust Extraction System

Specification

Filter unit main body and legs made from welded and fabricated 4mm steel with relevant cross bracing support.

External surfaces - painted in epoxy powder coated paint RAL 7035 and RAL 7016

Standard Cartridge filter type - 80/20 cellulose polyester media

Supplied with inlet duct

Cartridge Number 32PCS

Starter Panel Included

Extended legs for use with 1 tonne dust bag and automatic rotary discharge valve optional

Total Filter media surface area is 736m²

Application Dust collect (normal temperature)

Dust particle collection - metal dust collection bin underneath main hopper

ATEX rated explosion relief panel - optional

Polyester - Anti-static - Nanoweb Fr - full PTFE cartridges - available as a cost option

Automatic Cartridge cleaning - downdraft, reverse pulse air jet bank (frequency adjustable) - digital version optional

Supplied with auxiliary ductwork package including inlet, outlet and fan silencer.

Technical Characteristics

- Dust out used automatically pulse & recoil equipment
- Fan air flow 22,000m³/ h / 12,948cfm at 2,400Pa
- Fan motor size 18Kw (roof mounted)
- Resistance Initial filtering resistance—125-250Pa
- Normal filtering resistance—500-750Pa
- Final filtering resistance—1000-1250Pa
- Pressure-resistant -5000Pa
- Applicable temperature ≤ 135°C
- Efficiency 99.99%@ 2μ



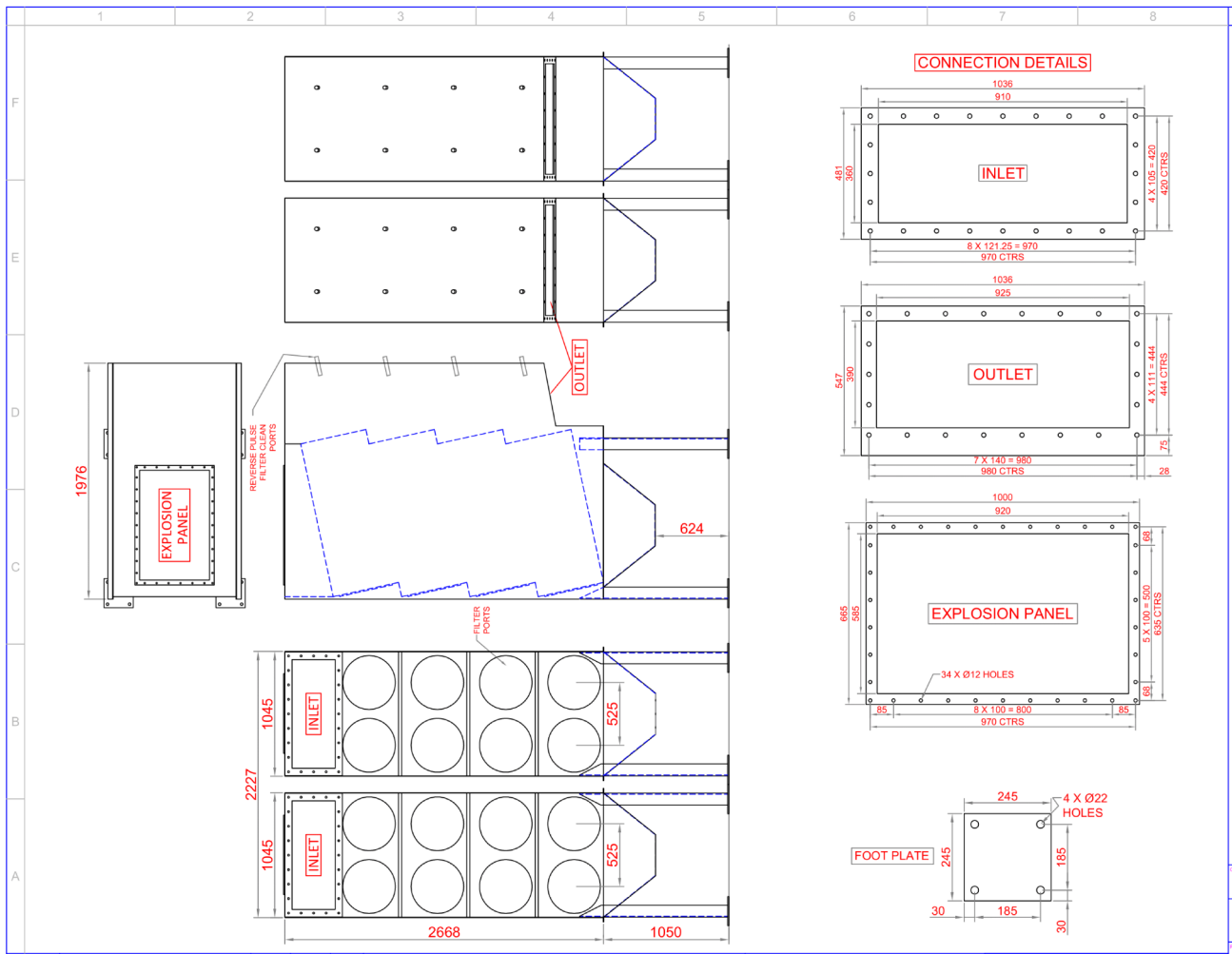


01642 056268 • info@vixen.co.uk

Vixen 4-32

Thirty-Two Cartridge, Reverse Pulse Jet Dust Extraction System

See 2D Dimensions Below



Dust Extraction Supplier in Thornaby, England
 73 Jay Ave. - Thornaby - Stockton-on-Tees - TS17 9LZ
 01642 056268 • info@vixen.co.uk • www.vixen.co.uk